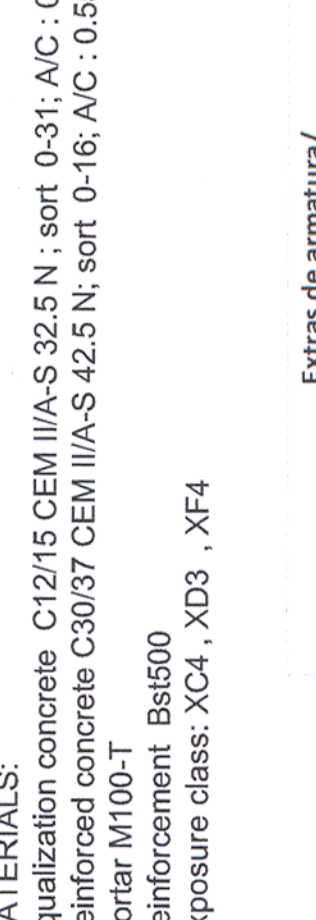


DETALIU / DETAIL "B"

Scara / Scale 1:10

MATERIALE:
 Beton de egalizare C12/15 CEM III/A-S 32.5 N ; sort 0-31; A/C : 0.75 ;
 Beton armat de monolitizare C30/37 CEM III/A-S 42.5 N; sort 0-16; A/C : 0.55;
 Mortar M100-T
 Armatura Bst500
 Clase de expunere: XC4 , XD3 , XF4
MATERIALS:
 Equalization concrete C12/15 CEM III/A-S 32.5 N ; sort 0-31; A/C : 0.75 ;
 Reinforced concrete C30/37 CEM III/A-S 42.5 N; sort 0-16; A/C : 0.55;
 Mortar M100-T
 Reinforcement Bst500
 Exposure class: XC4 , XD3 , XF4

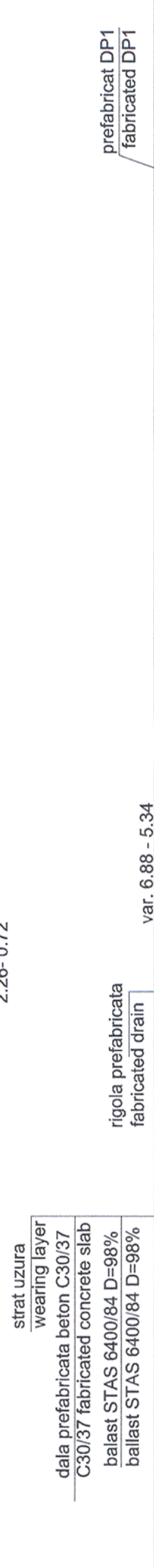
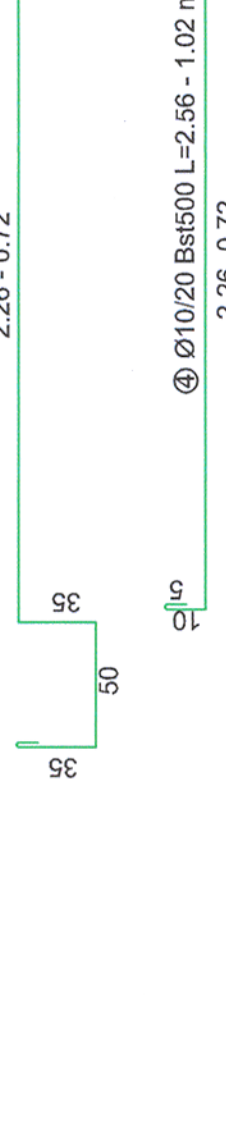
Acest plan anuleaza si inlocuieste planul nr. PT.03.03.28.RE.01.002 elaborat la data 01.2013.
 This layout plan canceled and replaced layout plan no. PT.03.03.28.RE.01.002 prepared on 01.2013.



Sectiune curenta A-A Peron 2

Current section A-A Platform 2

km 472+88 - 472+404



mortar M100 - T grosime 3cm
 M100 - T mortar 3cm thickness
 beton egalizare C12/15
 C12/15 equalizing concrete

mortar M100 - T grosime 3cm
 M100 - T mortar 3cm thickness
 beton egalizare C12/15
 C12/15 equalizing concrete

Teate tipurile de otel (in special Bst 500) vor avea obligatoriu clasa de ductilitate C
 All types of steel (especially Bst 500) will mandatory have the ductility class C

Element / Element	Marca / Mark	Ø / Diameter	Nr. Buc. / No. of pieces	Lungime / Length (m)	Bst500 (S500) Ø8 Ø10
Sectiune A-A	1	8	116	1.00	116.00
	2	10	5	5.00	25.00
	3	10	5	0.95	4.75
Sectiune B-B	4	10	5	3.10	15.50
	1	8	58	1.00	58.00
	2	10	5	2.90	14.50
	4	10	5	1.80	9.00
Lungime totale pe diametre / Total length on diameter (m)					174.00
Masa pe metr / Mass on meter (kg/m)					8.95
Masa totala pe tip de otel / Total mass on steel type (kg)					42.42
Masa totala pe tip de otel / Total mass on steel type (kg)					112.00

Element / Element	Lungime / Length (m)	Bucati / Pieces	Greutate / Weight (kg)	
			Pe U.M	Total
P1 L70x50x6	1.00	2	5.41	10.82
P2 Pb 50x4-50	0.05	4	1.57	0.314
P3 M6-50	—	4	0.03	0.12
Total / Total			11.254	11.254
Sudura / Welding (%)			0.33762	
Greutate Totala / Total weight [kg]			11.5916	

- NOTA 1:**
 The following technology will be applied in case when the prefabricated elements from the line will be removed in order to execute the line works with heavy track machines:
- the asphalt uncovering in the concrete cast in position area between prefabricated elements (DP)
 - removing the cast-in-place concrete
 - cutting the reinforcements in the central area of the concrete cast in position (at min. 1.50 m from the platform edge)
 - removing the prefabricated elements and storing them in the same section one which is not covered
 - track works execution
 - renewing the platform by mounting prefabricated elements on the initial position
 - while mounting the prefabricated elements on the platform it is ensured the continuity of reinforcement that were cut at point 3, by help of Bst500 welded fishplates having Ø 10mm and l = 250 mm
 - the removed area is casted-in-place with concrete C 30/37 and the uncovered asphalt is renewed.

- NOTA 1:**
 In situatia demontarii prefabricatelor dinspre linie pentru executarea lucrului pe linie cu masini grele de cale se va aplica urmatoarea tehnologie:
- Se decapteaza asfaltul in zona monolitizarii dintre prefabricate (DP)
 - Se demoleaza betonul in zona centrala a monolitizarii (la min. 1.50m de la marginea peronului)
 - Se raze armaturile in zona centrala a monolitizarii (la min. 1.50m de la marginea peronului)
 - Se demonteaza prefabricatele si se depoziteaza in aceeasi sectiune pe exteriorul peronului (prefabricatul demontat sa depoziteaza pe cei care nu se demonteaza)
 - Se executa lucrurile la cale.
 - Se reface peronul prin montarea prefabricatelor pe pozitia initiala.
 - Pe masura ce se monteaza elementele prefabricate de peron se asigura continuitatea armaturilor. Inalte in faza 3, cu eclise din Bst500 Ø10mm l=250mm sudate.
 - Se monolitizeaza cu beton C30/37 zona demolata si se reface asfaltul decoperat.

CLASA DE IMPORTANTA A CONSTRUCTIEI
 CONFORM P100/1-2006 ESTE III; CATEGORIA DE
 IMPORTANTA CONFORM H.G. nr. 766/97 ESTE "C".
THE CONSTRUCTION IMPORTANCE CLASS,
 ACCORDING TO P100/1-2006, IS III;
 CATEGORY, ACCORDING TO H.G. 766/97 IS "C"

Teate tipurile de otel (in special Bst 500) vor avea obligatoriu clasa de ductilitate C
 All types of steel (especially Bst 500) will mandatory have the ductility class C

mortar M100 - T grosime 3cm
 M100 - T mortar 3cm thickness
 beton egalizare C12/15
 C12/15 equalizing concrete

mortar M100 - T grosime 3cm
 M100 - T mortar 3cm thickness
 beton egalizare C12/15
 C12/15 equalizing concrete

Teate tipurile de otel (in special Bst 500) vor avea obligatoriu clasa de ductilitate C
 All types of steel (especially Bst 500) will mandatory have the ductility class C

PROIECTANT / DESIGNER:	PÖYRY		DATA / DATE:	01.2013
Aprobat / Approved	Şef de echipă / Team leader	C. Teodorescu	Verificat / Checked	Key Expert
	Expert Cheile	R. Wilan		
Subcontractant / Subcontractor	VIOTOP			
Aprobat / Approved	Ajunct / Deputy Team leader	A.M. Beicu	01.2013	
Proiectat / Designed	Inginer / Engineer	D. Oprea	01.2013	

Beneficiar / BENEFICIARY :
COMPANIA NATIONALA DE CALE FERATE "CFR" SA
European Investment Bank

MINISTERUL TRANSPORTURILOR
ROMANIA
 EUROPEAN UNION

Semnatura / Signature
 Data / Date
 01.2013

Denumire desen / Drawing name:
 Plan sectiuni curente peron 2 - Slatia Simeria
 Current sections plan platform 2 - Simeria Station

Scara / Scale	1:10; 1:20
Revisiuni / Revision	1/05.2013
Cod desen / Drawing Code	PT.03.03.28.RE.01.002

Nr / No
 02/09